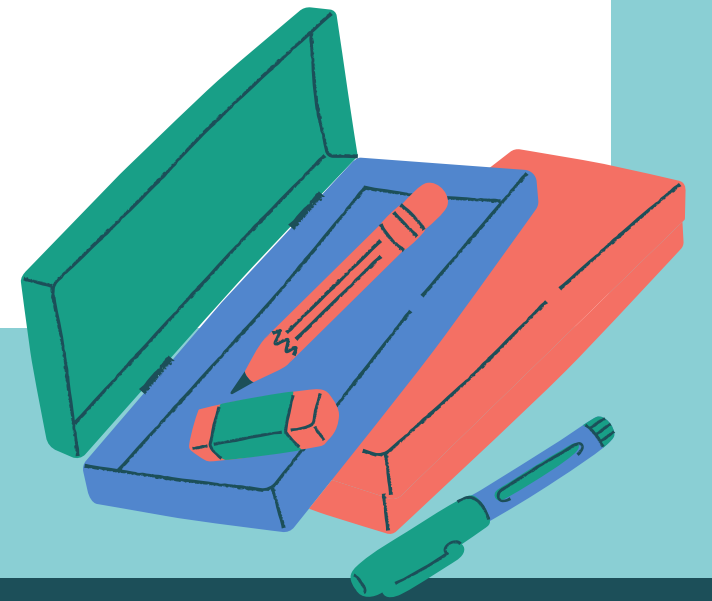




Wetzel County Schools

Educating Individuals for Success



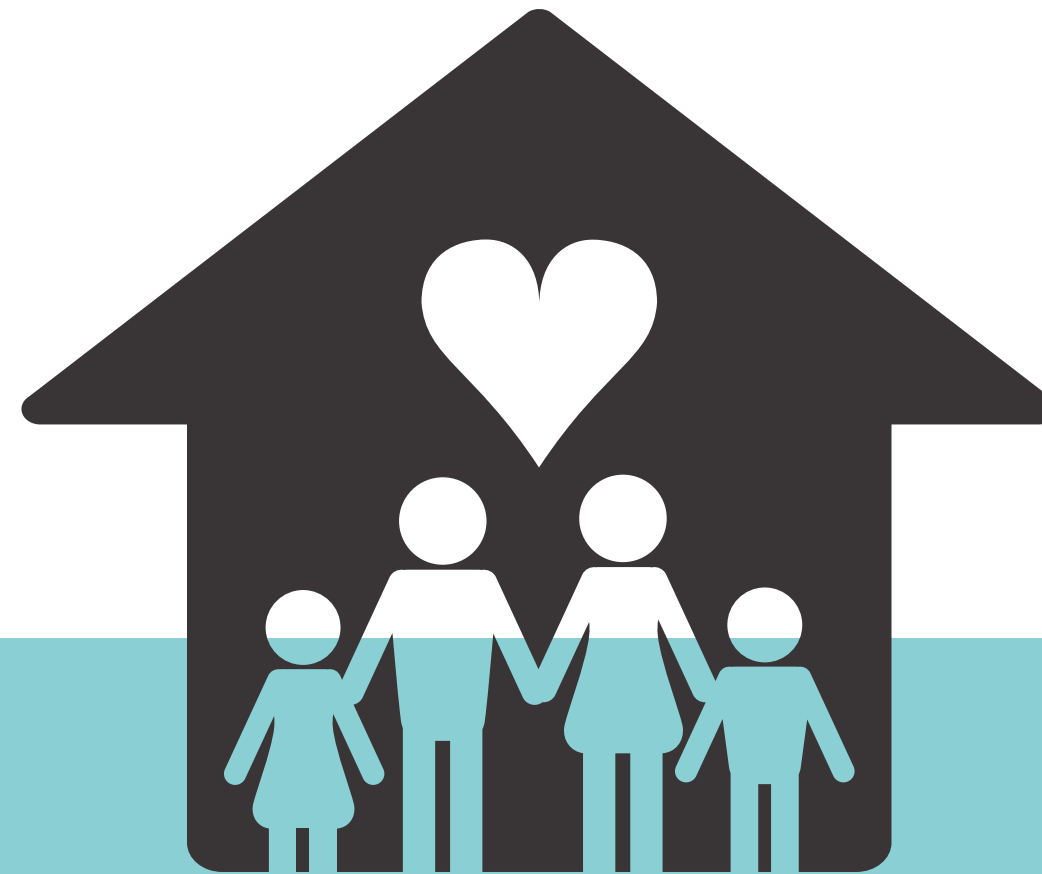


Strategic Plan Goals





1) Family Engagement and Wellness





**WETZEL COUNTY SCHOOLS WILL
AUTHENTICALLY ENGAGE AND LISTEN TO
FAMILIES SO THAT THEY ARE EQUIPPED TO
ACT AS EFFECTIVE PARTNERS IN THEIR
CHILD'S EDUCATION TO RAISE
ACHIEVEMENT 2.5%.**





2) Instructional Leadership





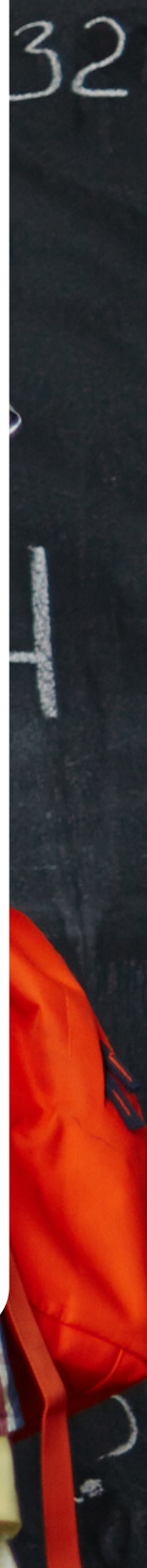
Wetzel County Schools will increase instructional accountability as per the WV Teacher Leadership Framework and Teacher Evaluation Rubric resulting in 2.5% gains in achievement.





West Virginia DEPARTMENT OF
EDUCATION

West Virginia Standards for Effective Schools.





1) Clear and Focused Mission.





Definition: The school's purpose and approach to support learning for all



- **A culture of ownership for student success**
- **Shared beliefs and values**
- **Commitment to a shared vision**





2) Instructional Leadership





Definition: Ensuring the effectiveness of instruction leads to student achievement





- **Principal ensures implementation of high yield instructional strategies**
- **Staff lead and assume responsibility for overall academic success**
- **Students are engaged in age-appropriate leadership opportunities**





3) High Expectations for Success





Definition:
**Purposefully providing
a climate in which all
students can learn and
succeed**





- **Staff believe in and demonstrate their ability to successfully teach all students**
- **Staff believe all students can and will obtain mastery**
- **Responses and adjustments occur to assure mastery when some students do not learn, or have already mastered the concept**





4) Positive and Safe Environment





**Definition: Orderly,
purposeful, and
accommodating of
all students' needs**





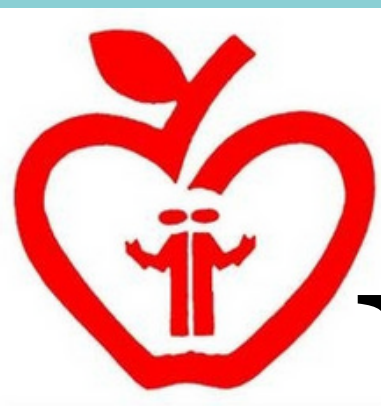
- **Collaboration and cooperation are pervasive among staff and students**
- **Appropriate behavior is expected and supported**
- **Student diversity is embraced and respected**





5) Equitable Opportunities to Learn and Effective Instruction





Definition: Sufficient time for meaningful learning is provided to all students





- **Instructional time is utilized efficiently and effectively**
- **Instructional activities are rigorous and aligned to student interest and State Standards**
- **Feedback is timely, ongoing, and supports individual student growth**





6) Frequent Monitoring of Student Progress





Definition: A variety of data are used as the basis for adjusting the instructional approach



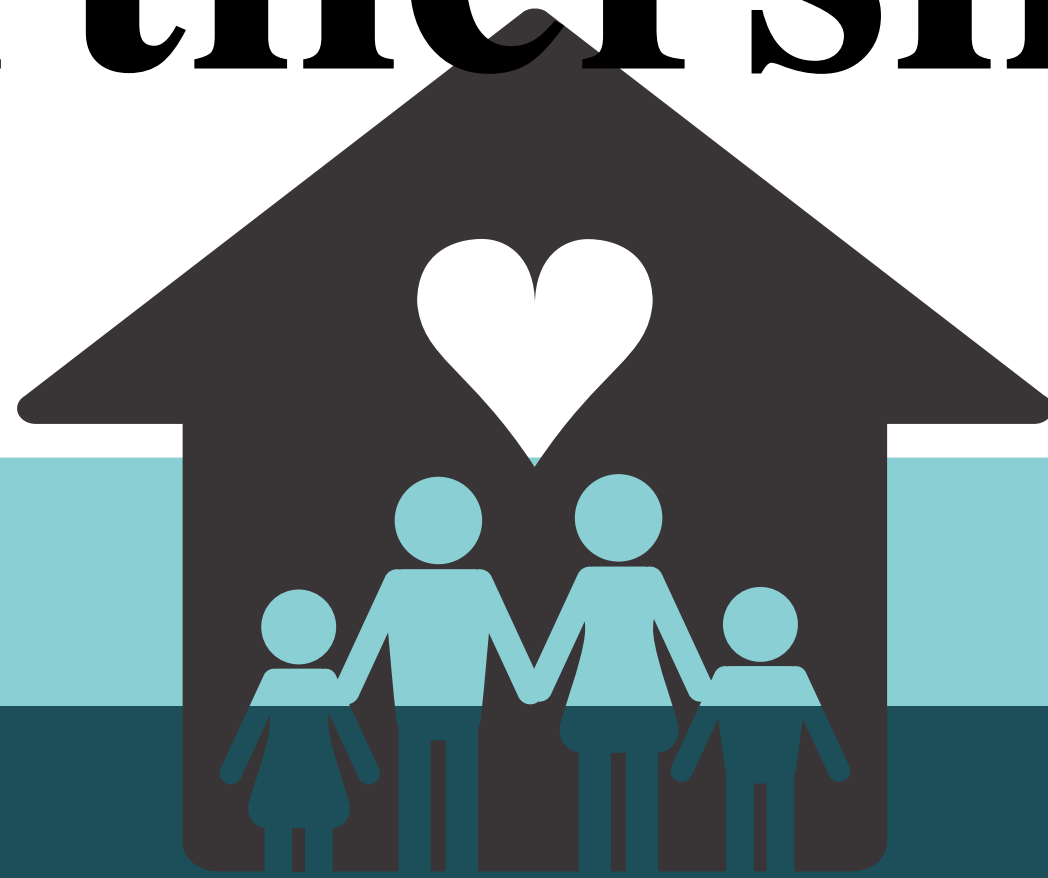


- **Formative assessments are utilized to measure student performance**
- **Student performance is used to guide instructional decisions**
- **Teacher monitors student progress toward established instructional goals**



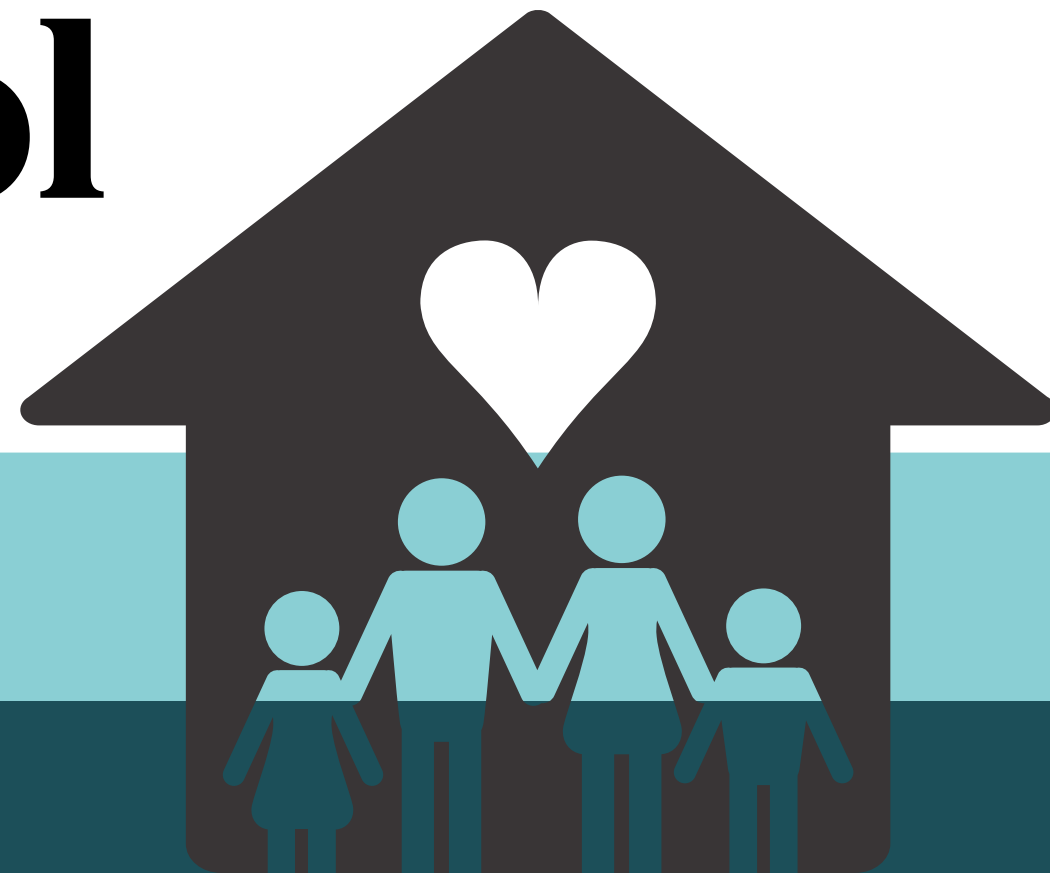


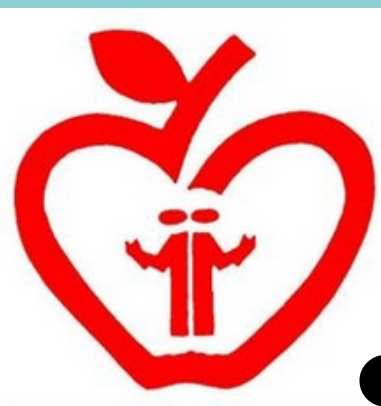
7) Family and Community Partnerships





Definition: Purposeful relationships exist between families, community, and the school





- **The school community fosters shared responsibility for student success**
- **Community understands and supports the school's mission**
- **Partnerships exist between school and community to support academic, social-emotional, and physical needs**





Wetzel County Teacher Leadership Framework





Five Teams

- 1) Beginning Teachers
- 2) Experienced Classroom Teacher Leaders
- 3) National Board Certification Candidates
- 4) Aspiring Administrators
- 5) Classroom Assessment Network





1) Beginning Teachers

We will use master teachers within our ranks.

The master teachers will have a critical friend from SREB to guide their work with our beginners





2) Experienced Classroom Teacher Leaders

Experienced classroom teacher leaders will work with two SREB critical friends.

These teacher leaders will collectively influence their colleagues, principals, and other members of the school communities to improve teaching and learning practices





3) National Board Certification Candidates Lead by WCS NBC Teachers

Four Components of the Certification Process

Mentoring of candidates in the program





4) Aspiring Administrators

Preparing leaders who can transform teaching and learning

Ensure all students have equitable access to quality learning experiences.

Existing county admins work with this group along with an SREB critical friend





5) Classroom Assessment Network

Linking assessment and instruction in a research driven process that is critical to effective learning.

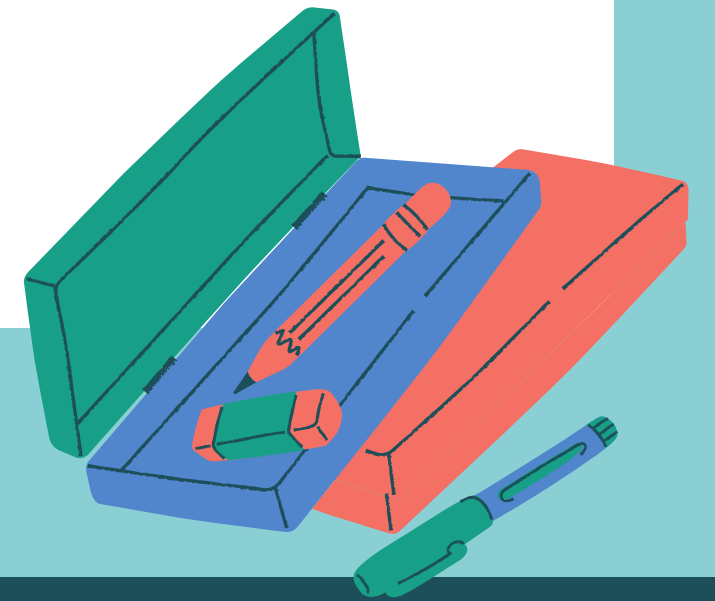
Led by Principals Fay Pritchard and Tammy Chambers





Wetzel County Schools

Educating Individuals for Success

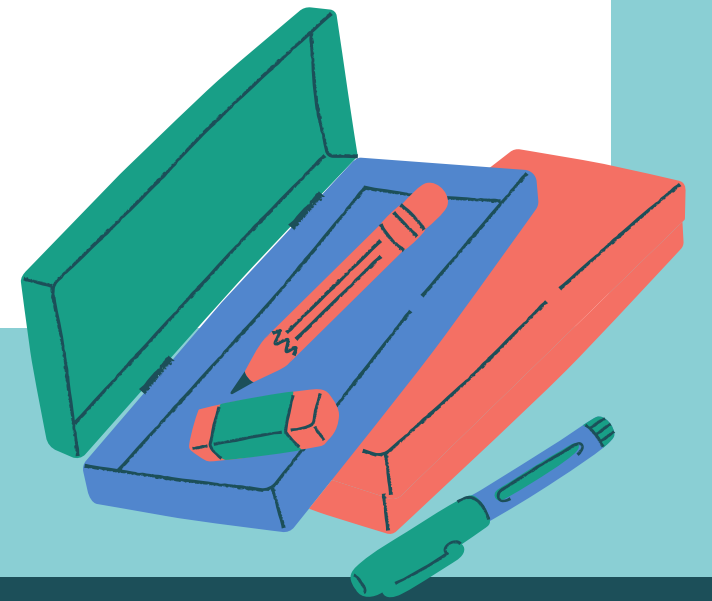


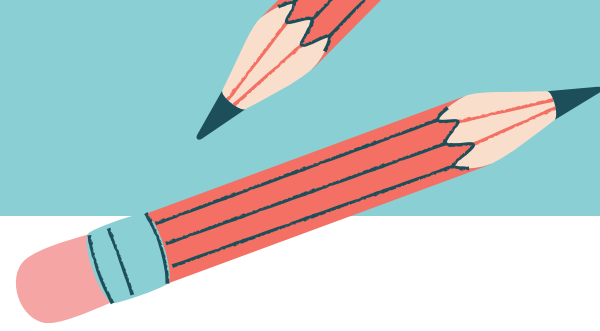


Wetzel County Schools

Two Strategic Plan Goals -
Family Engagement and
Instructional Leadership

Educating Individuals for Success





Wetzel County Schools

Seven WV Standards for
Effective Schools *all* work to
achieve our strategic plan goals!

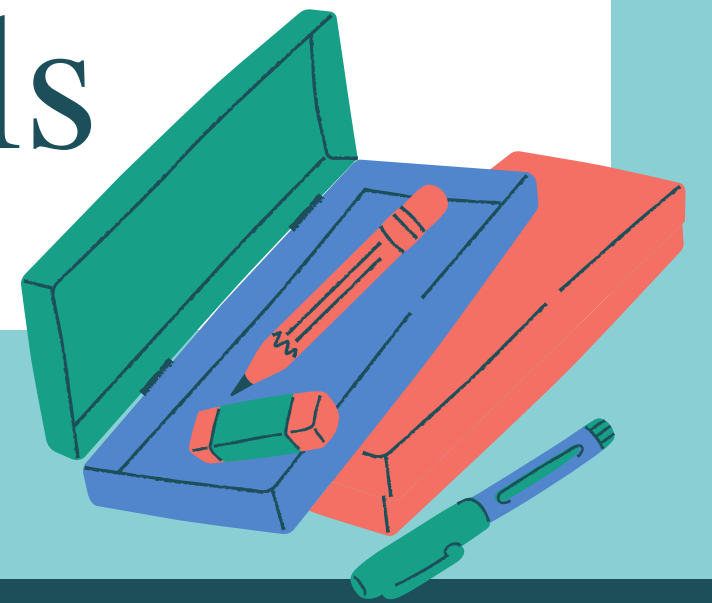
Educating Individuals for Success



Wetzel County Schools

Five Teacher Leadership Teams
that are driven by the standards
and by our strategic plan goals

Educating Individuals for Success





Wetzel County Schools

Questions?

Educating Individuals for Success

